

## GRANT FOCUS

Provide opportunities for up to twenty teachers/counselors to connect students with the world of work by proposing innovative career exploration programs, including career days, career pathway days, classroom instruction utilizing the internet, or other ideas. Grants funded will be required to submit an electronic written summary of the activity along with digital photos.

## SAMPLE ACTIVITIES

The following are examples only. Other relevant activities are acceptable. *Be Creative!*

- Career Fairs
- Business/Industry Presentations
- Character Education/Workplace Ethics
- Problem Solving Activities
- Field Trips
- Career Activity Days
- Leadership Skills
- Curriculum Materials
- Community Service Projects
- Job Shadowing

## PARTICIPATING SCHOOL DISTRICTS

Ceres Unified

Denair Unified

Hart-Ransom Union

Hughson Unified

Keyes Union

Modesto City Schools

Newman-Crows Landing Unified

Oakdale Joint Unified

Paradise Elementary

Patterson Joint Unified

Salida Union

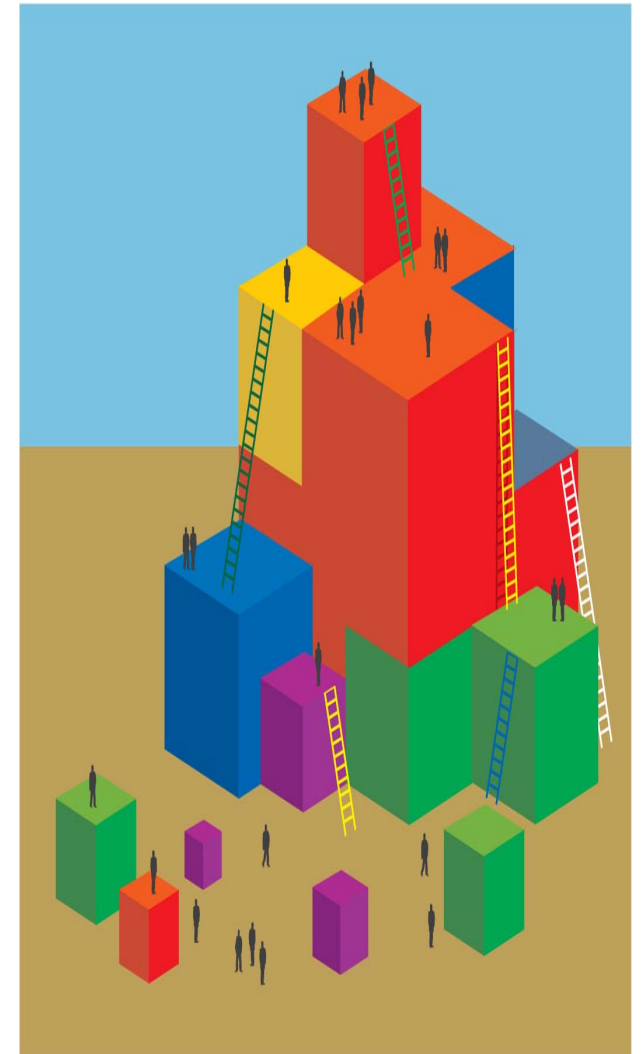
Turlock Unified

Waterford Unified

Stanislaus County Office Ed.

Stanislaus Partners in Education  
1100 H Street, Modesto, CA 95354  
Phone: 209.238.1766  
FAX: 209.238.4254  
[www.stanislauspartners.com](http://www.stanislauspartners.com)

## \$500 CAREER EDUCATION GRANTS



*Sponsored by:*  
**Stanislaus Partners In Education (SPIE)**

## GUIDELINES

- A. Grant proposals may be submitted by a K-12th grade teacher, teacher team, counselor or school of participating SPIE school districts (see back).
- B. Schools may receive a maximum of (2) two grants.
- C. Applicants may submit more than one proposal.
- D. The deadline for submission of proposals is September 18, 2009.
- E. Grants will be awarded by October 16, 2009.
- F. Grantees are required to:
  - electronically send a one-page summary report of their funded grant by May 15, 2010, and
  - provide 4-5 digital photos.

Submit grant electronically via [www.stanislauspartners.com](http://www.stanislauspartners.com). If you do not receive verification that SPIE has received your grant application please call: 209.238.1766

## APPLICATION INSTRUCTIONS

Please submit your grant proposal electronically, providing the following information:

- A. Name(s).
- B. Your title(s).
- C. School.
- D. School District.
- E. Grade level(s).
- F. Number of students to be served.
- G. Principal.
- H. School telephone number.
- I. Proposal title.
- J. Write a brief description of the proposal.
- K. An explanation of how grant funding will be used to meet proposal objectives.
  1. Specify how \$500 will be budgeted (*i.e.*, *supplies, software*).
  2. Indicate the cash or in-kind contributions that will be provided by the school, businesses, PTA, SIP, other.
- L. Provide the following measures:
  1. Start date of program and/or activities.
  2. Timeline of program/activities.

## SELECTION CRITERIA

Each proposal will be scored on the following criteria:

1. Evidence of business linkages.....15 pts  
(*partnerships, advisory, contributions, etc*).
2. Evidence of a detailed budget and in-kind Contribution.....15 pts  
(*resources, funding, supplies, etc*).
3. Scope of student participation.....15 pts  
(*school wide, classroom, grade specific, other*).
4. Measurable objectives.....15 pts
5. Proposal effectiveness meeting the concepts defined in "Grant Focus" .....15 pts
6. Evidence of curriculum integration.....15 pts
7. Approximate date (s) proposal will be implemented.....10 pts

TOTAL POSSIBLE POINTS: 100

