

PARTICIPATING DISTRICTS

Ceres
Chatom
Connecting Waters Charter
Denair
Empire
Gratton
Great Valley Academy
Hickman Community Charter
Hughson
Keyes
Knights Ferry
Modesto City
Newman-Crows Landing
Oakdale
Paradise
Patterson
Riverbank
Roberts Ferry
Salida
Shiloh
Stanislaus
Sylvan
Turlock
Valley Home
Waterford
Stanislaus County Office Ed.

BOARD OF DIRECTORS

James Bates
datapath

Ted Brandvold
City of Modesto

Laura Bream
G3 Enterprises, Inc.

Debbie Carranza
Foster Farms

Galen Carroll
Modesto Police Chief

Don Davis
Waterford USD

Ted Dickason
SPIE Scty/Treasurer
Retired, Businessman

Doris Foster
Workforce Development

Mike Gorrasi
SPIE President
Jasper Specialty Foods

Curtis Grant
Retired, CSUS

Teresa Guerrero
El Concilio

Susan Hensley
E. & J. Gallo Winery

Cortney Hurst
*Gallo Center
for the Arts*

Scott Kuykendall
Stanislaus COE

Bruce Laverty
Memorial Medical Center

Joy Madison
Manufacturers Council CV

Kristi Marsella
Small Business Owner

Oddmund Myhre
CSU, Stanislaus

Sara Noguchi
Modesto City Schools

Kristin Olsen
*Stanislaus County
Board of Supervisors*

Jeff Rowe
Patterson JUSD

Cecil Russell
*Modesto Chamber of
Commerce*

John Schneider
SPIE Past-President
Grimbleby-Coleman CPAs

Moya Semone
*Central Valley Autism
Project*

Jay Simmonds
Ceres USD

Bret Theodozio
Turlock USD

Dave White
Opportunity Stanislaus

Gene Wilkins
*Complere Engineering
Group, Inc.*

Henry Yong
*Yosemite Community
College District*

EDUCATOR INTERNSHIP PROGRAM



Stanislaus Partners in Education
1100 H Street, Modesto, CA 95354
Phone: (209) 238-1766 Email: spie@thevision.net
www.stanislauspartners.com

Sponsored by
Stanislaus Partners In
Education (SPIE)

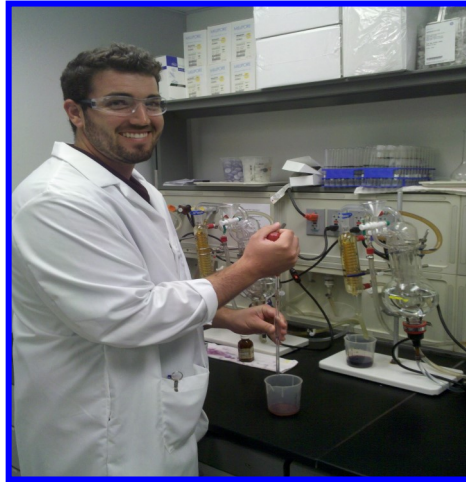
SUMMER INTERNSHIPS

In agriculture, business, government, energy conservation, non-profit agencies, manufacturing, technology, and other areas of your interest.

Sample of business/industry who participate: Gallo, G3 Enterprises, Sheriff, Fire, Police, Gottchalks Music, Foster Farms, Modesto Chamber of Commerce, Modesto Bee, DA's Office, Opportunity Stanislaus, Never Boring Design, Stewart & Jasper, Burchell Nursery, Center for Human Services, Habitat for Humanity, County Health, Modesto Nuts & more.

PERSONAL BENEFITS

- Learn up-to-date job competencies and requirements from employers.
- Enhance your ability to relate the world of work to students.
- Self-assess technical skills in relation to current teaching assignments.
- Develop greater collaboration between educators and employers.
- Earn **\$1,000**. stipend upon:
 - ✓ Successful completion of internship.
 - ✓ Completion of a Common Core standards-based lesson plan.
 - ✓ Successful completion of exit summary and review.
- Continuing Education Unit, CSU, Stanislaus available.



Internship Applications

Due: March 15, 2020

Individual Meetings

15-minute meeting with a SPIE Consultant

After school April 6-10

Selection of Interns

April 15, 2020

Intern Orientation Meeting

SCOE, Elmdale Room

1100 H Street, Modesto, CA

May 7, Thursday — 4:00

Length of Internship

40 hours created to meet your schedule.

Internship completion no later than

July 31, 2020

Exit Summaries Due By

August 3, 2020

Review & Celebration

Petersen Event Center

720 12th Street, Modesto, CA

August 25, 2020 — 4:00

**BUSINESS ATTIRE
RECOMMENDED**

APPLICATION PROCESS REQUIREMENTS

1. Educator in K–14th grade.
2. Complete the application online at www.stanislauspartners.com.
3. Provide a signed principal's commitment letter (*provided online by SPIE*) at time of application.
4. Provide a signed Worker's Compensation Insurance Verification form (*provided online by SPIE*) at time of application.

Mandatory meetings on:

May 7th at 4:00

August 25th at 4:00

**All of the above must
be received in the
SPIE office by
March 15, 2020**